

FRONT VIEW

SIDE VIEW

FRONT VIEW-WALLMOUNT DETAILS
(DOOR AND INTERNAL DETAILS NOT SHOWN)

TOP VIEW

BOTTOM VIEW

NOTES:

1. INSTALLATION SHALL COMPLY WITH ALL APPLICABLE NATIONAL, STATE AND LOCAL ELECTRICAL REGULATIONS.
2. REFER TO PRODUCT DOCUMENTATION FOR ADDITIONAL DETAILS PRIOR TO INSTALLATION AND SITE PREPARATION WORK.
3. ALL DIMENSIONS ARE IN MILLIMETERS [INCHES].
- △ 4. FRONT ACCESS REQUIRED FOR SERVICE.
5. CABLE ENTRY IS FROM BOTTOM OF THE CABINET.
6. THE WEIGHT OF THE UNIT IS 35 kg [77.2 lb].
7. OPERATING TEMPERATURE: 0°C TO 40°C [32°F TO 104°F]
8. COLOR: RAL 9003, GLOSS LEVEL 85%.
9. PROTECTION CLASS: IP20.
- △ 10 DRILL/PUNCH HOLES IN PLATE. REMOVE PLATE FROM CABINET BEFORE DRILLING/PUNCHING.
USE APPROPRIATE CABLE PROTECTION AROUND HOLE BEFORE CABLING IS INSTALLED.

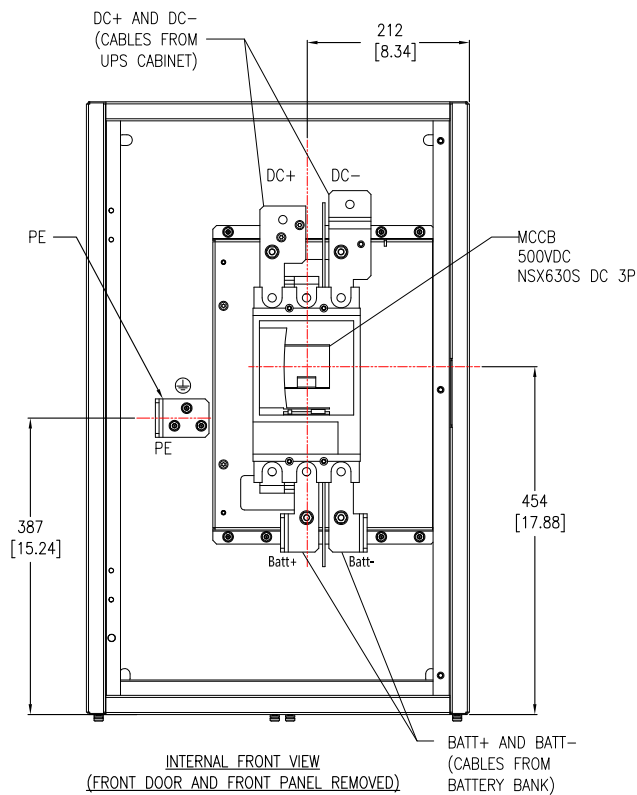
THIS DRAWING AND SPECIFICATIONS HEREIN ARE THE PROPERTY OF SCHNEIDER ELECTRIC AND SHALL NOT BE COPIED, REPRODUCED OR USED IN WHOLE OR IN PART, AS THE BASIS FOR THE MANUFACTURE OR SALE OF ITEMS WITHOUT WRITTEN PERMISSION FROM SCHNEIDER ELECTRIC. THIS DRAWING IS BASED UPON LATEST AVAILABLE INFORMATION AND IS SUBJECT TO CHANGE WITHOUT NOTICE.

Schneider Electric

TITLE: GALAXY VL
BATTERY BREAKER BOX 100-500kW, 400V
WITH ONE CIRCUIT BREAKER
GENERAL ARRANGEMENT

PROJECT: SUBMITTAL DRAWINGS SHEET 1 OF 2

DWG NO:	GVBBB630EL-1CB	REV.	0
DRAWN:	K NAGENDRA	14-MAY-20	FIRST ANGLE PROJECTION
ENGINEER:	TERRY HU	14-MAY-20	
APPROVED:	ALICE DU	14-MAY-20	

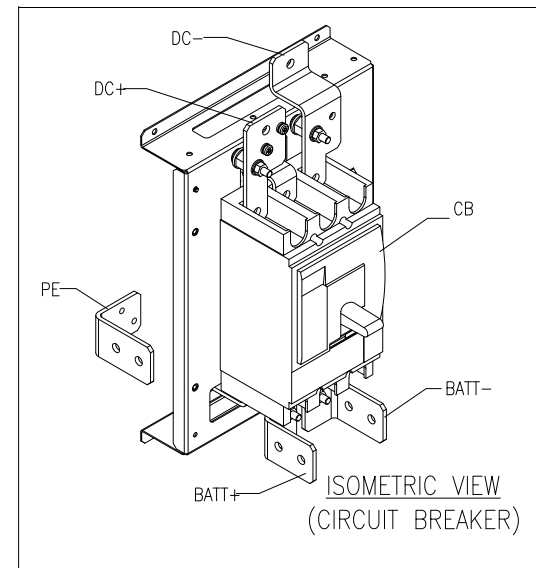
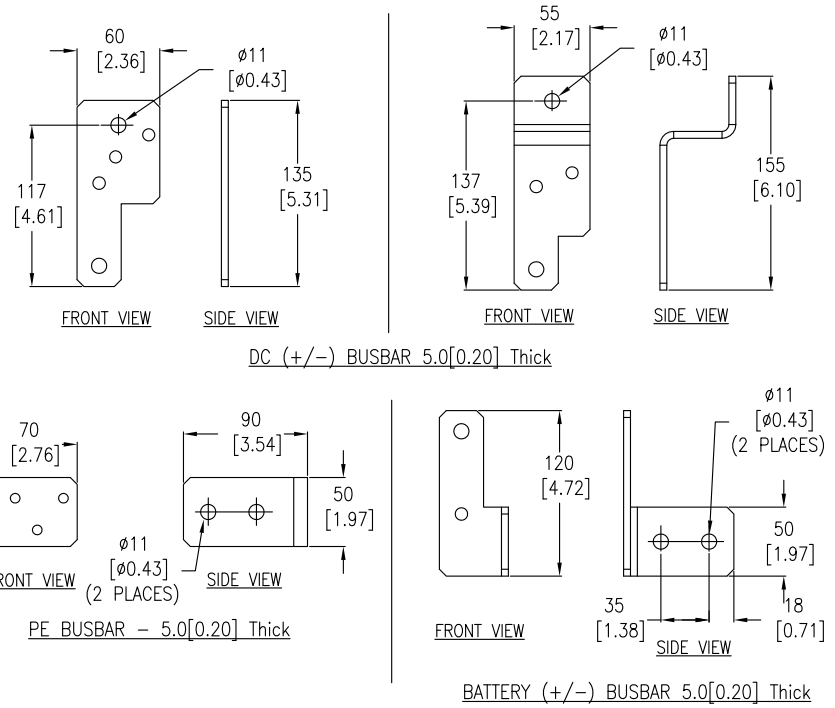


Voltage (V)	UPS Rating (kVA)	Trip Setting (A)	
		I _r	I _m
380/400/415	100	420	1500
	150	420	
	200	480	
	250	600	
	300	600	1800

NOTES:

1. INSTALLATION SHALL COMPLY WITH ALL APPLICABLE NATIONAL, STATE AND LOCAL ELECTRICAL REGULATIONS.
2. REFER TO PRODUCT DOCUMENTATION FOR ADDITIONAL DETAILS PRIOR TO INSTALLATION AND SITE PREPARATION WORK.
3. ALL DIMENSIONS ARE IN MILLIMETERS [INCHES].
4. CABLE SIZES ARE BASED ON TABLE B.52.5 OF IEC 60364-5-52 WITH THE FOLLOWING ASSERTIONS:
 - a) 90°C CONDUCTORS.
 - b) AN AMBIENT TEMPERATURE OF 30°C [86°F].
 - c) USE OF COPPER CONDUCTORS.
 - d) INSTALLATION METHOD 'C'
 IF THE AMBIENT TEMPERATURE IS GREATER THAN 30°C [86°F], LARGER CONDUCTORS ARE TO BE SELECTED IN ACCORDANCE WITH THE CORRECTION FACTORS OF THE IEC.
5. SOME STRUCTURAL DETAILS HAVE BEEN OMITTED FOR THE PURPOSE OF CLARITY.
6. FOR CONTROL INTERFACE DETAILS, REFER TO SYSTEM WIRING DIAGRAM.
- △ 7. REFER TO ABOVE TABLE FOR TRIP SETTINGS.

BUSBAR DETAILS



THIS DRAWING AND SPECIFICATIONS HEREIN ARE THE PROPERTY OF SCHNEIDER ELECTRIC AND SHALL NOT BE COPIED, REPRODUCED OR USED IN WHOLE OR IN PART, AS THE BASIS FOR THE MANUFACTURE OR SALE OF ITEMS WITHOUT WRITTEN PERMISSION FROM SCHNEIDER ELECTRIC. THIS DRAWING IS BASED UPON LATEST AVAILABLE INFORMATION AND IS SUBJECT TO CHANGE WITHOUT NOTICE.

Schneider Electric

TITLE: GALAXY VL
BATTERY BREAKER BOX 100-500kW, 400V
WITH ONE CIRCUIT BREAKER
INTERNAL DETAILS

PROJECT: SUBMITTAL DRAWINGS SHEET 2 OF 2

DWG NO: GVBBB630EL-1CB

DRAWN: K NAGENDRA 14-MAY-20

ENGINEER: TERRY HU 14-MAY-20

APPROVED: ALICE DU 14-MAY-20

REV. 0

FIRST

ANGLE

PROJECTION